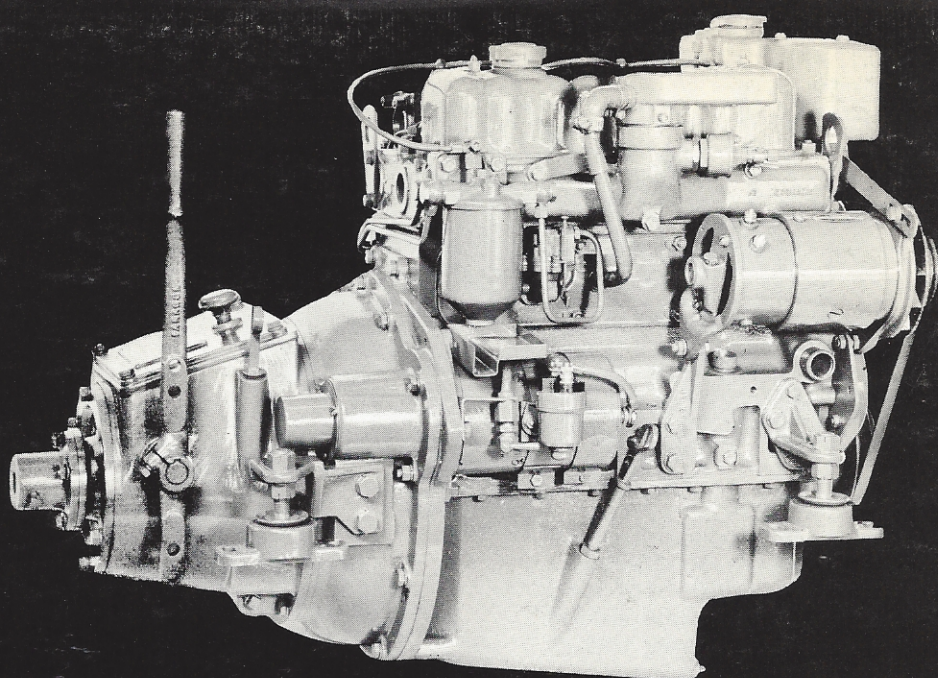
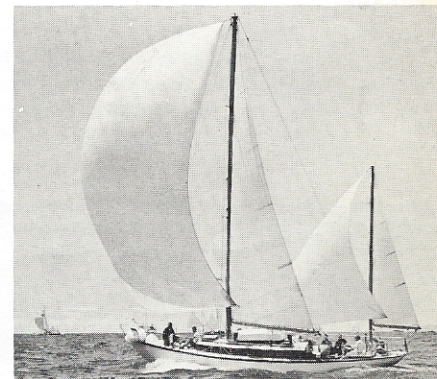
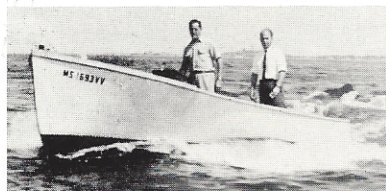
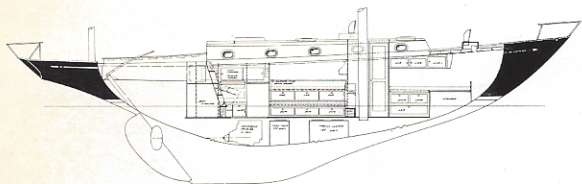


THE
WESTERBEKE
AUXILIARY
DIESEL
MODEL
FOUR
99



TESTED and SPECIFIED by LEADING DESIGNERS... ENGINEERED TO FIT
INSTALLED EASILY BY LEADING BOAT BUILDERS... COMPLETE OWNER SATISFACTION.



NOW YOU CAN POWER OR REPOWER WITH CONFIDENCE.

- * John G. Alden & Co., Inc.
- * Chapman & Kayjian
- * Dickerson Boat Builders, Inc.
- * Eldridge & McInnis
- * Henry R. Hinckley & Co.
- * Knutson
- * The Rainbow Co., Inc.
- * Philip L. Rhodes
- * Sparkman & Stephens, Inc.
- * Tripp & Campbell
- * American Marine Ltd.
- * John Atkin, NA
- * Robert E. Derecktor Yacht Yard
- * International Marine Corp.
- * D. O. Hill, NA
- * A. LeCompte Co.
- * Luders Marine Construction Co.
- * Lunn Laminates
- * Mercer Reinforced Plastics



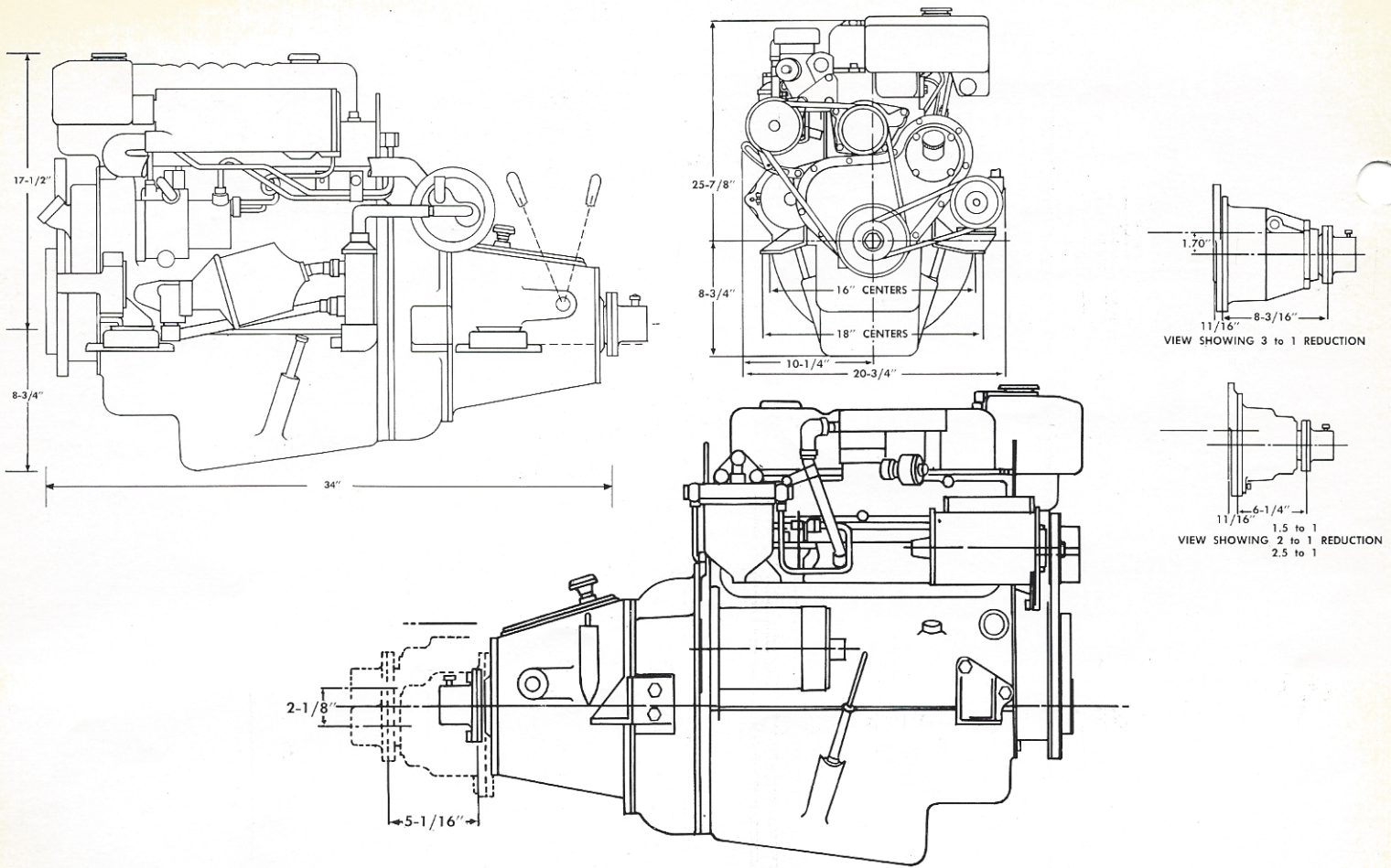
WESTERBEKE consults with owners, gives technical assistance to the designers and experienced advice to the builders.

INEXPENSIVE... QUIET... DEPENDABLE... SAFE... STARTS IMMEDIATELY



J. H. WESTERBEKE CORP.

35 TENEAN STREET, BOSTON 22, MASSACHUSETTS
MANUFACTURERS & DISTRIBUTORS OF INDUSTRIAL & MARINE ENGINES AND GENERATORS



FOUR 99 SPECIFICATIONS

Engine weight 475 lbs. for direct drive, 495 lbs. for reduction gear models. Lightweight metals used only where appropriate. (No sea water to aluminum contact.)

The most compact diesel engine package in the world, per rated horsepower. Approaching gas engine dimensions, auxiliary application is practical where never before. Note dimension chart above.

DIRECT DRIVE MANUAL. REDUCTION GEAR MANUAL — 1.5:1, 2:1, 2.5:1, 3:1. DIRECT DRIVE HYDRAULIC. REDUCTION GEAR HYDRAULIC — 2:1, 3:1. VEE DRIVE — 1.67:1, 2:1.

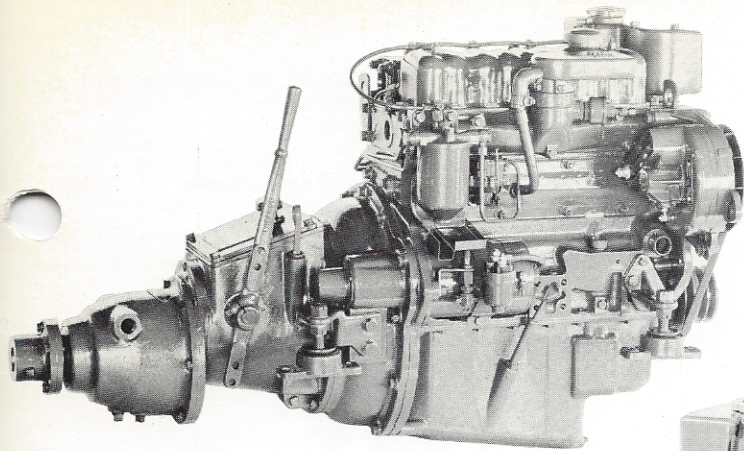
Economy and dependability is guaranteed. The Four-99 now in its seventh year of development and manufacture, is used worldwide in a variety of applications. It has been given most exhaustive testing under all conditions of operation. Fuel consumption is unusually low. See fuel curve on opposite page.

Complete parts servicing is guaranteed. Immediate shipment from Boston and other major ports.

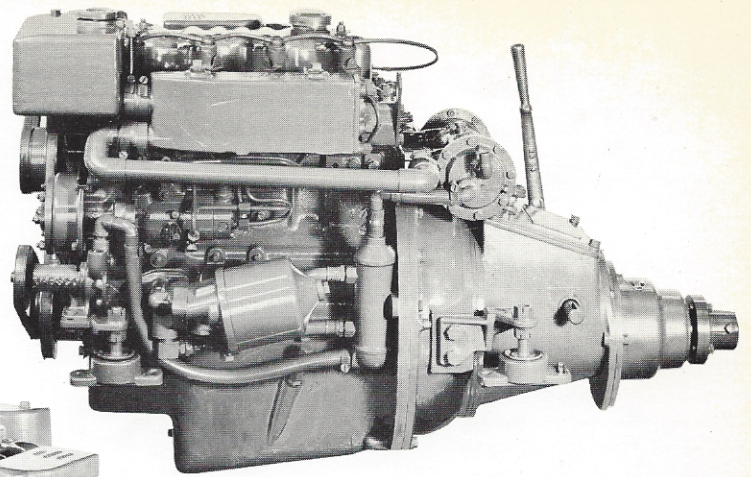
All threads American Standard. No special tools needed.

With this rugged, dependable Westerbeke Model "Four-99", satisfaction has been found in its quiet, inexpensive operation. This strong, compact diesel auxiliary engine, light in weight, is tailored with over-all dimensions for easy installation. The Four-99 can now be installed in confined engine compartments. The safety, dependability and economy of diesel fuel is now yours with the Westerbeke compact, light, moderately priced Four-99.

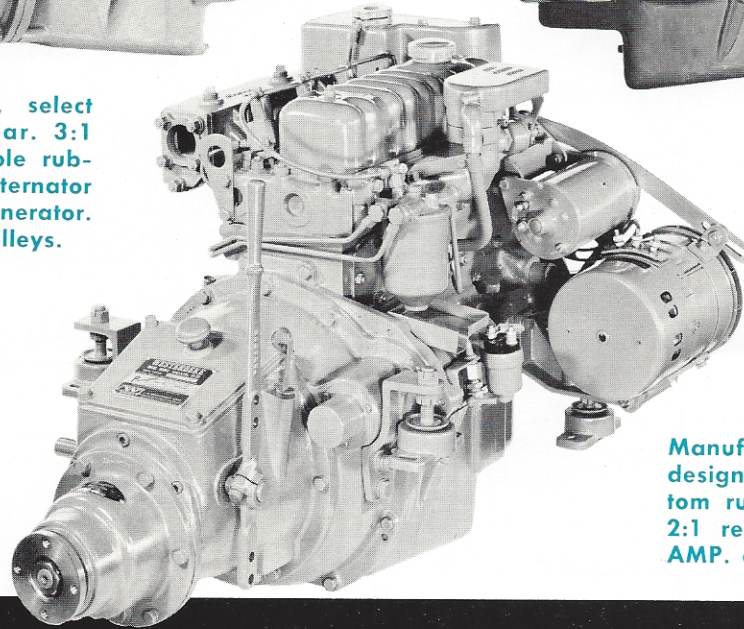
Type:	4 cylinders in line, 4 cycle.
Displacement:	99 cu. in., Bore 3", Stroke 3.5".
Power:	25 SHP (at the propeller) at 2000 RPM. 30 SHP (at the propeller) at 2500 RPM.
Weight:	475 lb. direct drive, 495 lb., 2:1 reduction.
Combustion System:	Pintle type nozzle fuel injection.
Cylinder Block:	One-piece alloy iron casting.
Crankshaft:	Chrome Molybdenum steel forging.
Main Bearing:	Thin wall type, lead bronze lined.
Camshaft:	High Duty cast iron.
Connecting Rods:	Drop forged steel.
Pistons:	High silicon aluminum alloy.
Cylinder Head:	One-piece alloy iron casting.
Fuel Injection Equipment:	Distributor type fuel pump with hydraulic governor.
Lubrication:	Eccentric lube oil pump, camshaft driven.
Mounting:	4 supporting feet, combination 16" or 18" centers. (Special mounts designed on request.)
Rotation:	Turns left hand propeller.
Exhaust Manifold:	Fresh water cooled.
Cooling System:	Fresh and raw water pumps, through heat exchanger.
Note:	Specifications subject to change without notice.



For very heavy craft, select suitable reduction gear. 3:1 shown above. Adjustable rubber mounts. 40 AMP. alternator in place of standard generator. Two extra belt drive pulleys.



Heat exchanger and oil cooler mounted and piped ready for boat installation. Adjustable flexible rubber mounts. 1.5:1 reduction gear.



Manufactured for one particular designer and builder. With custom rubber adjustable mounts. 2:1 reduction gear. Extra 100 AMP. alternator.

Angle of Installation: 17° maximum.
Electrical: 12-volt grounded system. 14-amp. generator standard. Larger sizes (35, 40, 60, 100 amp.) available.

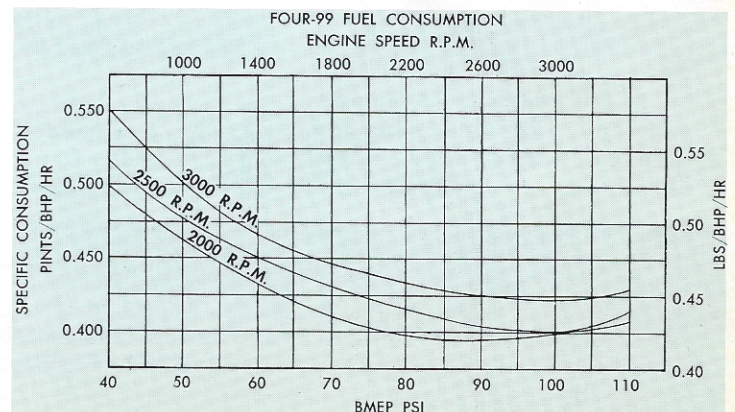
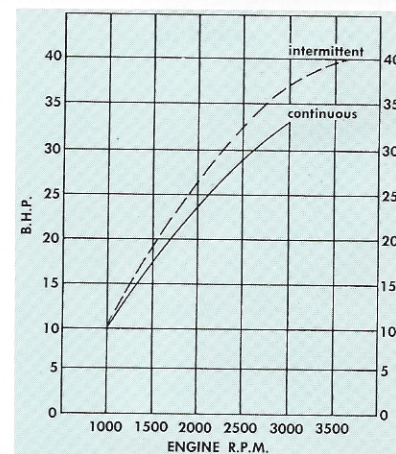
Reverse and Reduction Gear: Manual type (Paragon). (Hydraulic available.)

Standard Equipment: Fresh water cooling, Fuel and Lube oil filters, cold starting aid, shaft coupling, generator regulator and cutout, starter switch, clutch lever, exhaust flange.

Optional Extras:

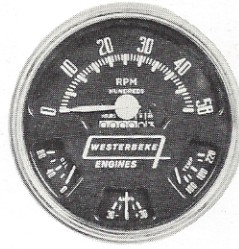
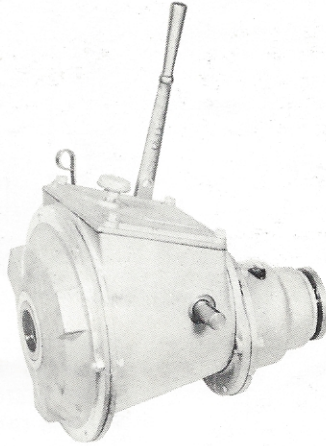
Deluxe Instrument Panel	Front end oil fill
One or two extra Vee pulleys	
Adjustable flexible mounts	
Extra 35 ampere 12-volt DC Generator Mounted	
Extra 40 ampere Alternator Mounted	
Extra 60 ampere Alternator Mounted	
Extra 100 ampere Alternator Mounted	
35 ampere Generator or 40 ampere Alternator Mounted in place of Standard Generator.	
Heat exchanger mounted on engine	
Hydraulic starter with emergency hand pump	

Other Recommended Uses: Lifeboats, Club launches and yacht tenders, small commercial fishing boats, open utility boats.

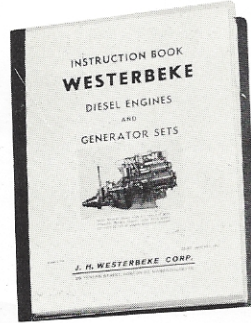


MODEL FOUR 99 • FEATURES • OPTIONS • ACCESSORIES

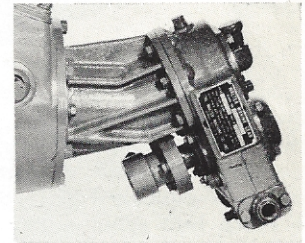
The reverse and reduction gear shown above is made specifically for use on the Westerbeke Four-99 — note the convex front plate which allows the gear to be installed forward into the flywheel. This feature saves 1 5/8" of length — 1.5:1, 2:1, and 2.5:1 ratios are all the same length. Note also the oversized clutch cover which facilitates inspection or clutch adjustment.



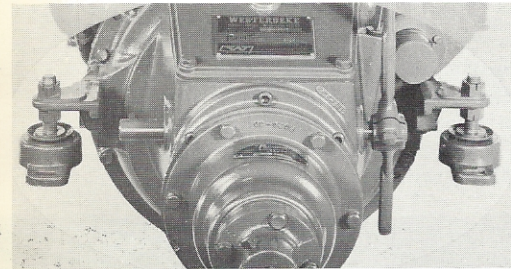
Deluxe Instrument Panel available with the Four-99 has mechanical tachometer and pressure gauge. Each panel is supplied with tachometer cable to your specified length, sending unit for water temperature and a flexible hose for connecting oil pressure tubing to engine block. The meter shown gives valuable hour register for oil changes, etc.



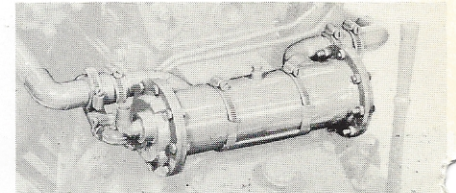
Westerbeke Four-99 instruction book and parts list. 132 pages of helpful information.



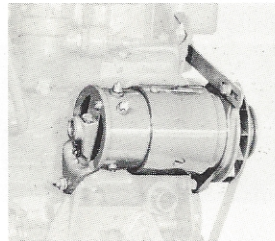
Difficult installations where space is a premium may be solved with the VEE DRIVE — 1.67:1, 2:1.



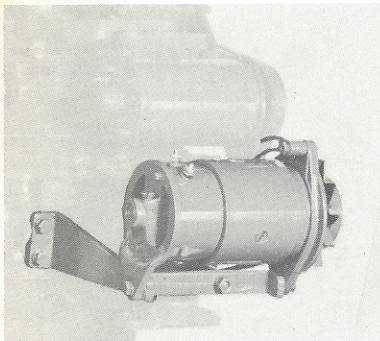
Seen here are flexible, adjustable mounts fitted to the Four-99. Illustrated are mounts at 18" centers 1" below shaft line. Other arrangements available (see lower photo on page 3).



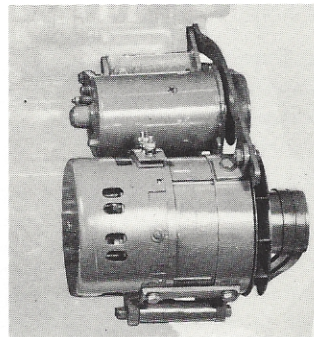
Heat exchanger mounted on engine is shown here. Note that space used does not interfere with other equipment or hinder clutch adjustment. Should need arise, the entire unit may be removed by loosening hose clamps.



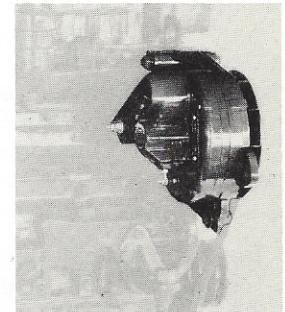
The 35 ampere generator mounts in the same space as the standard 14 ampere generator.



See how securely the extra 35 ampere generator mounts beneath the standard 14 ampere generator. This same mounting used with extra 40 or 60 ampere alternators.



The 100 ampere alternator securely mounted on an extension of the front motor support takes heavy electrical loads in stride.



Here shown is 40 ampere Leece-Neve alternator mounted in place of the standard 14 ampere generator. Fits close to the block.